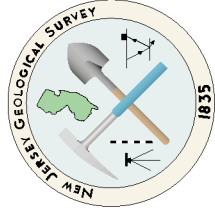
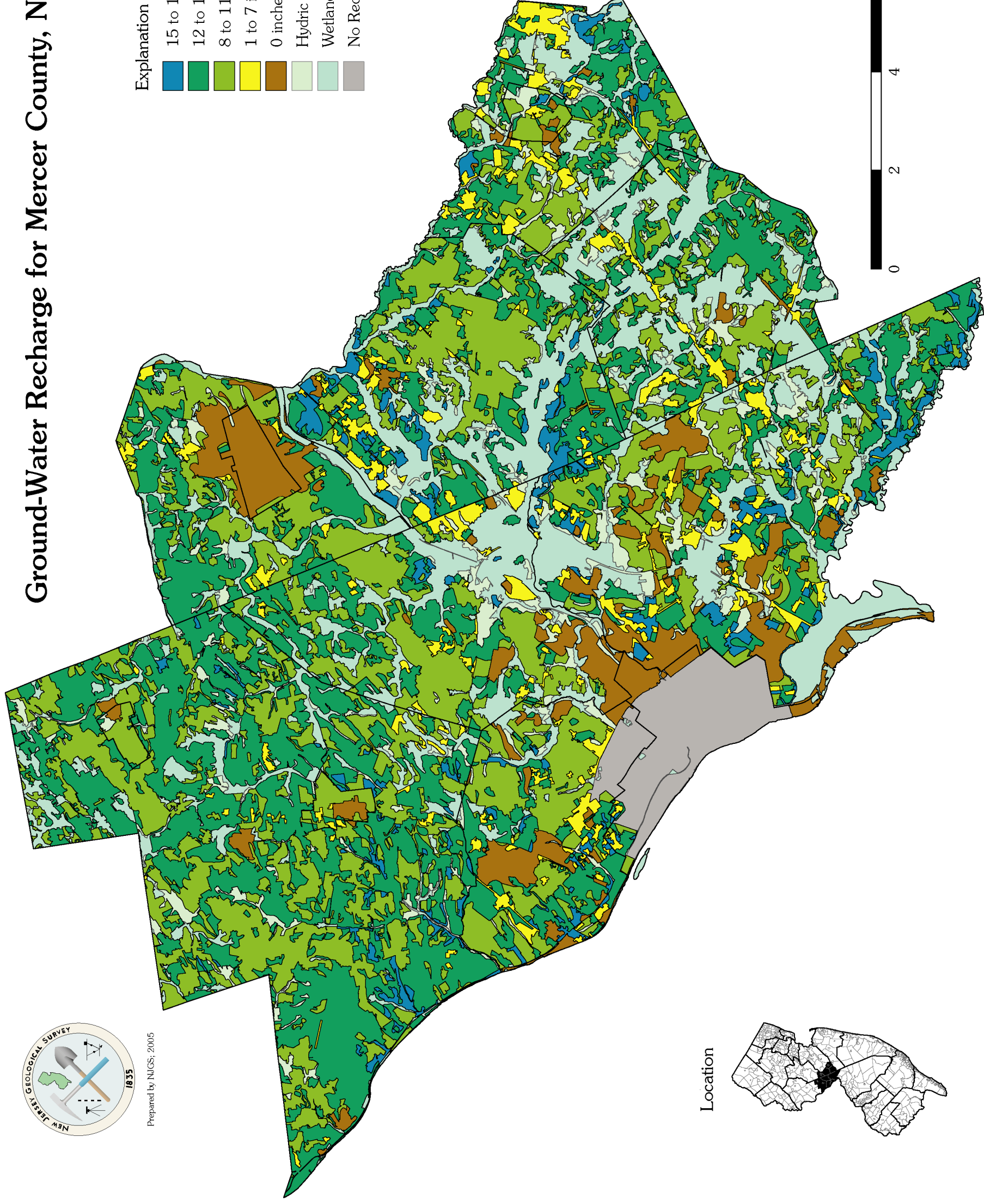


Ground-Water Recharge for Mercer County, New Jersey



Prepared by NJGS, 2005

- Explanation
- 15 to 16 inches/year
 - 12 to 14 inches/year
 - 8 to 11 inches/year
 - 1 to 7 inches/year
 - 0 inches/year
 - Hydric Soils
 - Wetlands and Open Water
 - No Recharge Calculated



Location

